



OPTISAT S2/S receiver

professional DVB-S2/S satellite receiver

OPTISAT S2/S key features:

DVB-S2 brings service operators 30 % bandwidth savings of DVB-S in CCM broadcast applications (thanks to LDPC/BCH FEC codes). Bandwidth savings up to 70 % are possible in Satellite Internet by adaptive coding and modulation (ACM).

OPTISAT S2/S supports parallel reception of 2 satellite carriers. Flexible Linux based architecture accompanied by TS processing modules allows demultiplexing, remultiplexing, regional add insertion, regional TV distribution OPTIMUX etc.

OPTISAT S2/S receivers enable remote firmware upgrade via inbound satellite stream (OTA). Firmware boots from a Compact flash module (4 GB) available from front panel, allowing on-site firmware upgrade.

OPTISAT S2/S receivers allow inbound signalling to configure e.g. demultiplexer and outputs settings centrally.

Remote control is available via ergonomic WEB2 interface and SNMP. LCD front panel with control buttons serves for local configuration and monitoring.

Multistream support and optional input stream synchro-

nization (ISSY), external GPS clock inputs (1pps, 10 MHz) improves OPTISAT S2/S capabilities for direct-to-transmitter signal distribution in SFN networks. Integration of DVB-C, DVB-T modulators at output presents integrated solution

OPTISAT S2/S can connect to modulators, multiplexers, transcoders etc via DVB-ASI, IP interface or RF.

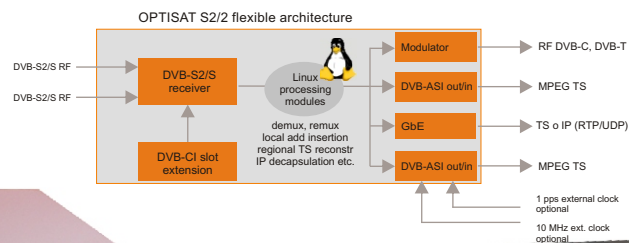
OPTISAT S2/S receivers are intelligent solution for multiple professional applications.

Applications:

- Cable TV headends
- Satellite Internet
- DVB-T, DVB-H signal distribution direct to TV transmitters
- Signal distribution to IPTV head-ends (e.g. hotels)
- Digital signage
- Datacasting, file multicast, CDN

Standards compliancy:

EN 300 421, EN 302 307, ISO 13818-1, EN 301 192, TR 102 376, TS 102 606, EN300 429, EN 300 473, EN 300 744, TS101191, EN302 755, EN302 304, EN 300 748, EN 300 468





Inputs:

- RF input 2 x F connector, 75 Ω
- Frequency 950-2150 MHz
- Signal level -35 to -65 dBm
- Roll-off factor 0,2; 0,25; 0,35
- GbE - IPTV, TSoIP, ProMPEG FEC CR3 v.2
- DVB ASI 1-4xBNC connector, 75 Ω, model dependent
- Optional: 1 pps & 10 MHz, 2xBNC connector, 50 Ω
- DiSeqC 2.x

DVB-S2

- Modulation: QPSK, 8PSK, 16APSK, 32APSK*
- CCM, VCM, opt. ACM (return channel)
- Dual tuner for CCM mode only
- Max symbol rate: QPSK - single/dual 67/47 Mbaud
- 8PSK - 63/31, 16APSK - 47/NA, 32APSK* - 38/NA
- Max bitrate: 135 Mbps
- Min symbol rate: 1 Mbaud, optional 150 kBaud
- FEC coding: LDPC & BCH
- Code rates: 1/2, 3/5, 2/3, 3/4, 4/5, 5/6, 8/9, 9/10
- Multistream, ISSY optional
- IP decapsulation: MPE, ULE, GSE

DVB-S

- Modulation: QPSK
- Max symbol rate: 30 Mbaud (72,7 Mbps)
- FEC coding: Convolutional, Reed Solomon
- Code rates: 1/2, 2/3, 3/4, 4/5, 5/6, 6/7, 7/8

Decryption:

CI slot, BISS

Outputs:

- DVB-ASI 2 x BNC connector, 75 Ω
- GbE - IPTV, TSoIP, ProMPEG FEC CR3 v.2

Management & Control:

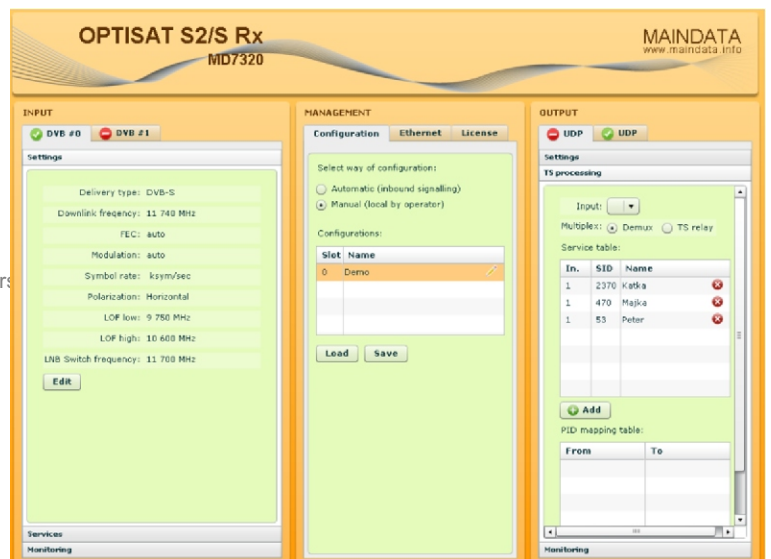
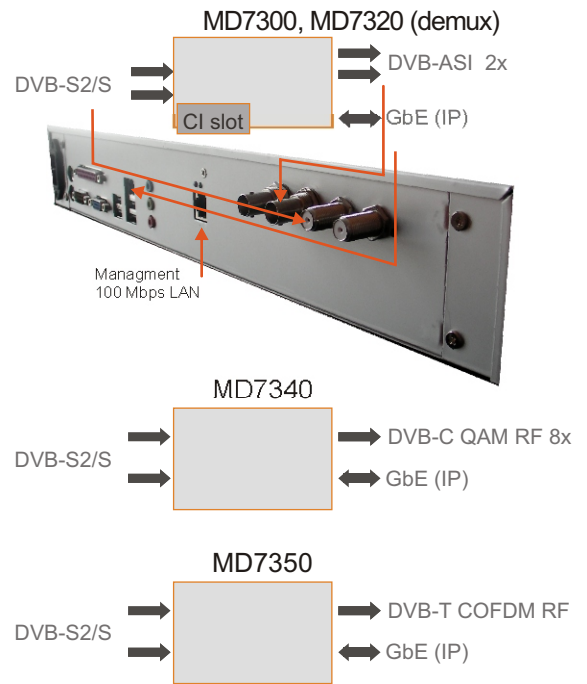
- WEB 2.0 UI, SNMP v.1 & 2, CLI
- front panel LCD (20x4), 6 control buttons

Physical parameters:

- height 65 mm ~ 1,5 RU, width 435 mm
- depth 407 mm, 430 mm(+ears), 450 mm(+connectors)
- weight netto: 4,2 kg, RoHS, Lead free
- weight brutto: 5,5 kg
- package dimensions: 145 x 490 x 505 mm
- operating Temperature 0~50°C
- operation Humidity 10% ~ 90%

- Power supply** 110-240 V, 150-250 W adapter
- CF module 4 GB

OPTISAT S2/S models:



MAINDATA, spol. s r.o., Senická 23, 811 04 Bratislava, Slovakia, EU
 tel: + 421 2 5465 2191, fax: + 421 2 5465 2192, sales@maindata.info